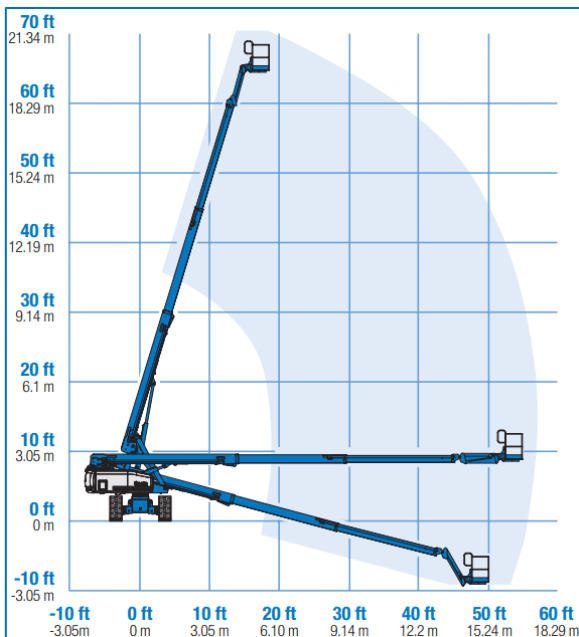




### Kenmerken

- Zelfrijdend
- Met Jib
- Teleskoop hoogwerker
- Rupsbanden
- Mobiel op volle hoogte
- 4 x 4 aandrijving (Allrad)





## 22m Diesel Telescoophoogwerker Genie Type: S65 TraX



### Technische Data

<b>Maximale werkhoogte</b>	<b>21,80 m</b>
<b>Maximaal zijdelings bereik</b>	<b>17,10 m</b>
<b>Maximale gondelbelasting</b>	<b>227 kg</b>
<b>Maximale stempelbreedte</b>	<b>n.v.t.</b>
<b>Machine lengte</b>	<b>9,50 m</b>
<b>Machine breedte</b>	<b>2,49 m</b>
<b>Machine hoogte</b>	<b>2,72 m</b>
<b>Totaalgewicht</b>	<b>10024 kg</b>
<b>Afmeting gondel (l x b)</b>	<b>0.91 x 2,44</b>
<b>Rotatie gondel</b>	<b>135°</b>
<b>Aandrijving</b>	<b>Diesel</b>
<b>JIB</b>	<b>Ja</b>
<b>Bandensoort</b>	<b>Rups (4 x 4)</b>

### MA-BO Hoogwerkers BV

-  [www.ma-bo.info](http://www.ma-bo.info)
-  0316-745613
-  [planning@ma-bo.info](mailto:planning@ma-bo.info)
-  Hengelderweg 8a, 6942 NC, Didam